

DON'T WAIT! Choose Your FRS Retirement Plan

3rd Reminder

Get Help Choosing Your FRS Retirement Plan! Use the 1st Election Choice Service

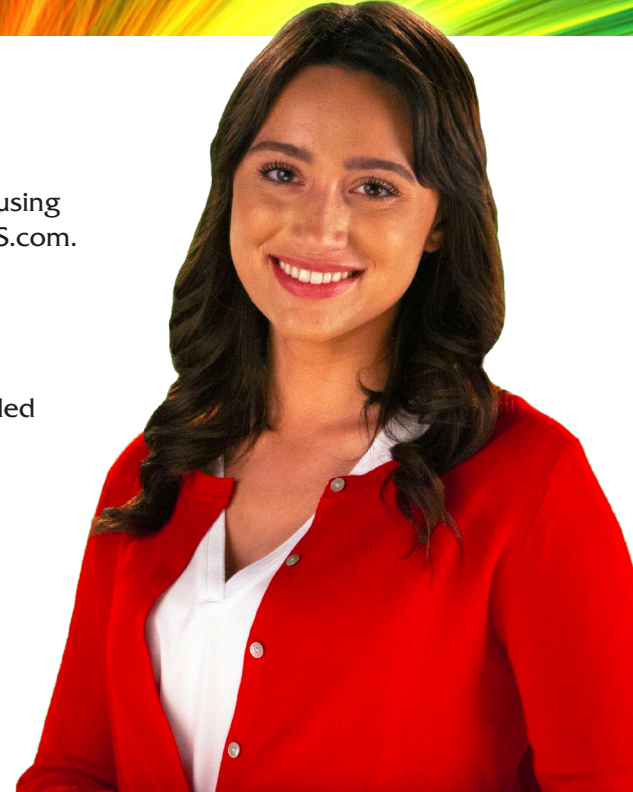
You can get a free, personalized estimate of your benefit under each plan using the online 1st Election Choice Service after you sign in or register on MyFRS.com.

Here's how to register:

1. Visit MyFRS.com.
2. Click the "Register" button in the "Login" section of the home page.
3. Enter the requested information for all 8 steps. Your 6-digit PIN is provided on the other side.

Once you're registered, select "Click here" at the bottom of the Confirmation page to log in to MyFRS.com. Then, you'll be able to:

- **Learn** about the two plans and the resources available to help you make a choice.
- **Compare** your estimated benefit under each plan to determine which plan may best meet your retirement needs.
- **Enroll** in the plan of your choice.





Florida Retirement System

[RECIPIENT'S EMPLOYER'S NAME]
PO BOX 1495 • LINCOLNSHIRE IL 60069-1495

[RECIPIENT'S NAME]
[Address 1]
[City, State ZIP]

Your MyFRS.com PIN: [#####]

3rd Reminder

[Recipient's First Name],

Don't miss your chance to choose the retirement plan that's right for you!

**Your FRS retirement plan choice is due by
4:00 p.m. ET on [Month ##, Year]!**

- ▶ If you do not submit a plan choice by your deadline, the Investment Plan will be considered your 1st Election by default.
Exception: If you are in the Special Risk Class, the Pension Plan will be considered your 1st Election by default.

Need Help Choosing a Plan?

Use the 1st Election Choice Service. See other side for details.

Ready to Choose?

To enroll now, go to: MyFRS.com/imageserver/OnlineELE1.htm

For help enrolling or to enroll by phone, call the MyFRS Financial Guidance Line:

1-866-446-9377, Option 1 (TRS 711) • 8:00 a.m. to 6:00 p.m. ET
Monday through Friday, except holidays

Learn more on MyFRS.com.

Rev. August 2022